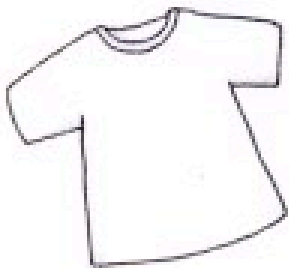


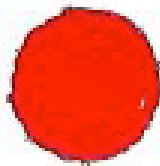
Soft-Sculpture Snowman

This happy and huggable snowman wants to decorate your room this Christmas season.

What you need:



adult large-size white T-shirt



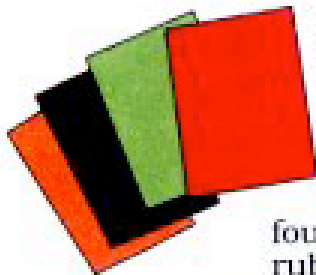
big red pom-pom

colorful old adult-size sock



fabric scrap

red, green, black, and orange felt



four sturdy rubber bands

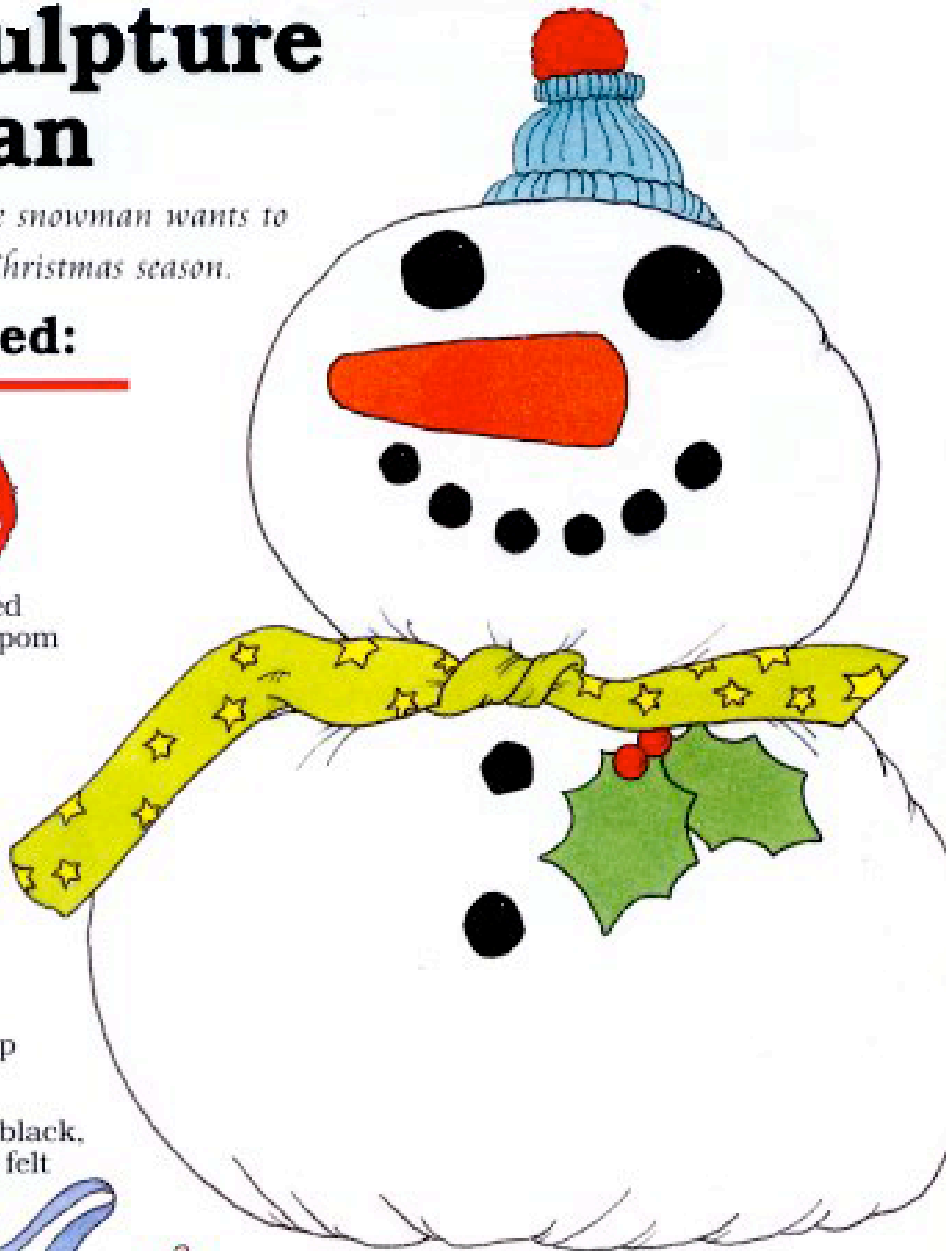
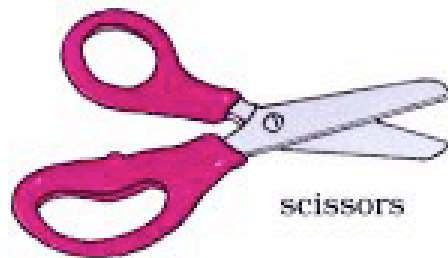


bag of fiberfill

white glue



scissors



What you do:

- 1** Push the sleeves to the inside of the shirt. Gather the fabric around the neck opening and hold it together with a rubber band. Stuff the top part of the shirt with fiberfill for the head of the snowman. Use a rubber band to hold the head stuffing in place and form the neck.
- 2** Stuff the bottom of the shirt with fiberfill. Close the bottom of the snowman with a rubber band.
- 3** Cut the cuff off the colorful sock to make a hat for the snowman. Pull the cuff down over the gathered neck of the shirt at the top of the snowman. Glue the cuff hat in place. Roll the bottom edge of the cuff up to form the brim of the hat. Close the top of the cuff with a rubber band. Glue the red pom-pom at the top of the hat.
- 4** Use the fabric scrap to cut a scarf for the snowman, and tie it around his neck.
- 5** Cut a carrot nose for the snowman from the orange felt. Cut circles of black felt for the eyes, mouth, and buttons of the snowman. Glue the face pieces and buttons on the snowman.
- 6** Give the snowman a Christmasy look by cutting two holly leaves from the green felt and some holly berries from the red felt. Glue the holly on one side of the snowman.

This snowman will not melt, even when you give him a Christmas hug!

